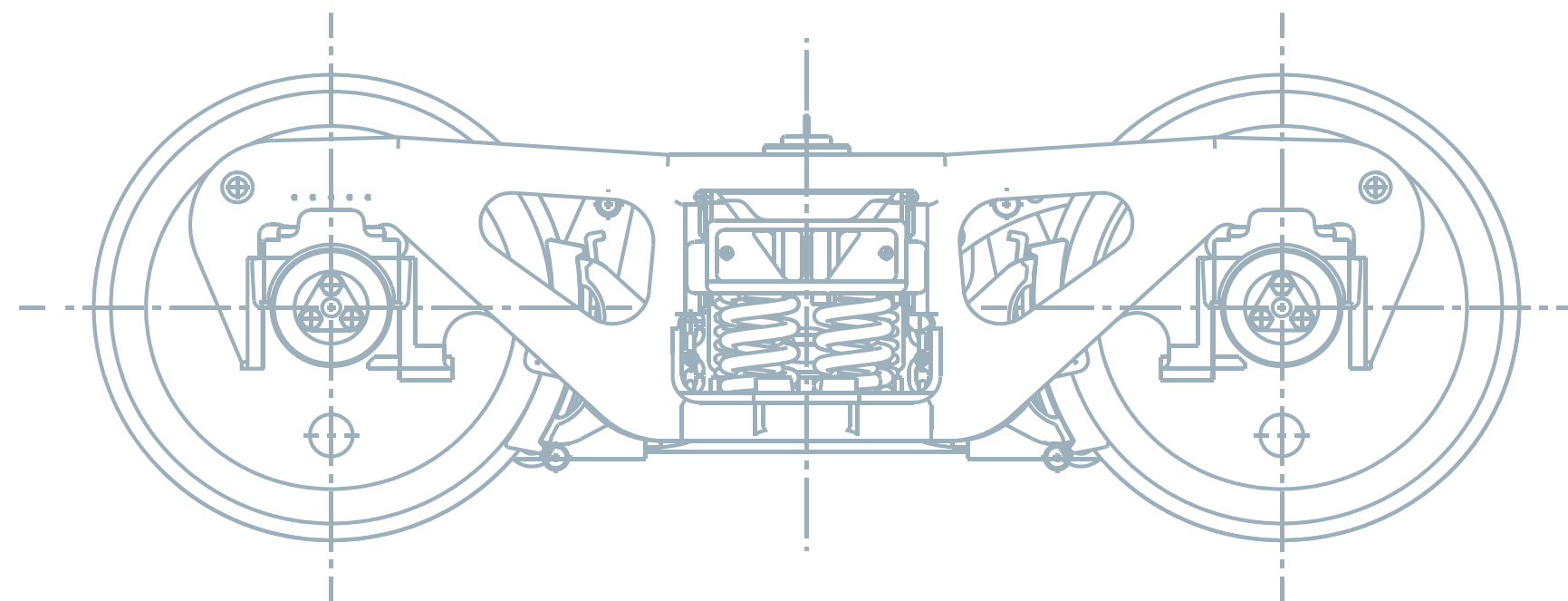




# Jiangsu Railteco Equipment

## ROLLING STOCK PARTS INTRODUCTION



### JIANGSU RAILTECO EQUIPMENT CO., LTD.

Add:58 Tangshi West Road,Economic and Technological Development Zone,Zhangjiagang City,

Jiangsu Province, P.R.China. PC:215600

Tel:+86-512-8015 7996 Fax:+86-512-8250 9835 E-mail:info@railteco.com

RAILTECO

[www.railteco.com](http://www.railteco.com)

WHEELSWORLD

[www.wheels-world.com](http://www.wheels-world.com)

2021



This album of products and data for reference only, subject to change without notice.  
Final interpretation of this album owned by the Jiangsu Railteco Equipment Co., Ltd.

**DESIGN · MANUFACTURE · QUALITY · SERVICE**



Quick Response · Fast Delivery · Comprehensive Service





## ABOUT RAILTECO

**Jiangsu Railteco Equipment Co., Ltd.** was established in 2012, which is a professional manufacturer focus on rail transportation equipment products. Railteco is principally engaged in the design, production, maintenance, sales and service of railway equipment products, such as freight wagon, passenger car (coach), accessories of freight wagon and passenger car, coach interiors and locomotive accessories.

**Headquarters of Railteco** which locates in Economic and Technological Development Zone, Zhang Jiagang City, Jiangsu Province, is responsible for group management and core equipment product design, processing, integration, quality control, project management and sales work. Railteco owns two subsidiaries: **Anhui Railteco** locates in Tongling city, Anhui province, which is mainly responsible for axle forging and rail transit maintenance equipment manufacturing; **Suzhou Railteco** is mainly responsible for the design, processing, integration and project management of railway automation system.

Railteco's top management team developed a strategy of "Overseas first & domestic later, and gradually to the city rail market; wheel & axle first and parts later, and gradually to the complete vehicle market," confirmed a business policy of "Technology is the core, market is the guider, quality is the assurance, production is the auxiliary", persist in the core competition concept of "Quick Response, Fast Delivery and Comprehensive Service", fully taking the management of excellent enterprises as reference, using the advanced management methods at home and abroad, playing the advantages of private enterprises mechanism, wining the opportunities for the company's rapid and steady development.

Railteco has been approved as a high-tech enterprise in 2015, and also got IRIS (international railway industry standard) quality management system certification, the scope of certification is axle and wheel sets production for the rail transit; Railteco has got AAR M-1003 certification in the scope of A15 axles manufacturing, B33-1 wheels press-fit workshop - freight vehicles and B33-5 wheels and axles processing - freight vehicles; Railteco has obtained TSI certification in the scope of BA002 axles, BA004 wheel sets, Y25 Lsd1-K bogie and Y25 Ls1-K bogie; Railteco has obtained EN15085 certificate in the scope of bogies, underframes, wagon body and brake equipment; Railteco has awarded ISO 9001: 2008, ISO 14001: 2004, OHSAS18001: 2007 certifications, etc. Railteco also passed the supplier qualification from German DB customer and Alstom France. During business operation process, Railteco always adhere to the implementation of the industry's highest management standards, continuous improvement of the work, continuous improvement of products and service, to reach the maximum pursuit of customer satisfaction.

We are committed to build Railteco into an excellent manufacturer of China's private rail equipment, to provide better products and service for rail transport equipment industry.



# RAILTECO QUALIFICATION AND CERTIFICATION



AAR M-1003



OHSAS 18001: 2007 Standard



ISO 9001 : 2015 Standard



ISO 14001 : 2015 Standard



TSI FOR AXLE



TSI FOR WHEEL SET



TSI FOR Y25Lsd1-K Bogie  
Y25Ls1-K Bogie



IRIS



En15085 Welding Certificate



GOST

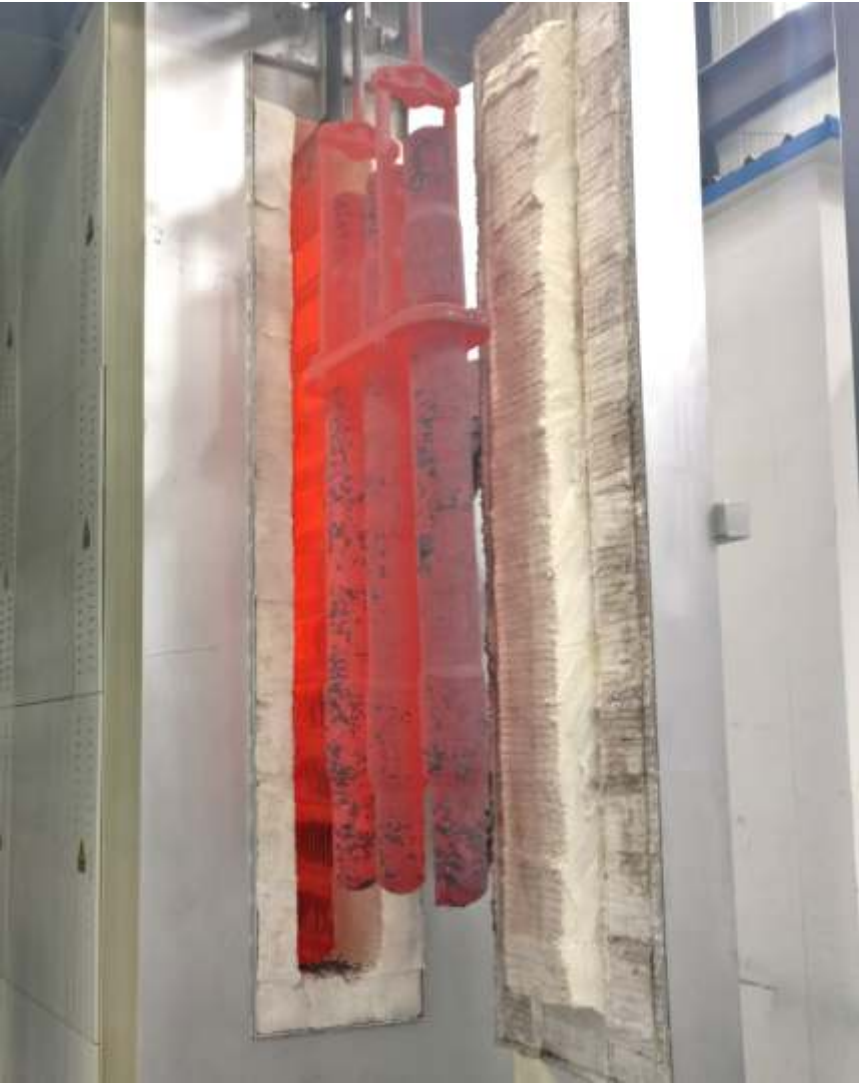


# RAILWAY AXLE

- Axle Production Capacity up to 50,000 Pieces Annually.
- Axle Type: Drive Axle with multiple Seats, Locomotive Axle; Non-Driven Freight Wagon Axle, Passenger Coach Axle.
- Minimum Order Quantity:1PC

## PRODUCT FEATURES

- Various Standard: TB/T 2945, AAR M-101, UIC 811-1, EN 13261, BS 5892 PART1, IRS 16/95, JIS E 4502, KSR 9220 , GOST 31334, AS 7515 and Other Customer's Requirement.
- Raw Materials: Lz50, Jz45, AAR Grade F, EA1N, EA1T, EA4T, IRS 16/95, SFA60A,etc.





# TECHNICAL PROCESS OF AXLE PRODUCTION



1. Storage Of Materials



2. Cutting



3. Heating



4. Heat Treatment



5. Alignment



6. Hydro-forming



7. Test Bar Sampling



8. Tensile Testing



9. Metallography



10. Ultrasonic Test



11. Milling End Face, Drilling Center Hole



12. Double Head Saw



13. Rough Machining



14. Machining Inspection



15. Storage



# RAILWAY MONOBLOCK WHEEL & STEEL TYRE

- Forging Wheel & Casting Wheel
- Wheel Type: Freight Wagon Wheel, Passenger Coach Wheel, Locomotive Wheel.
- Various Standard: AAR M-101, UIC 811-1, EN13261, GOST 31334, IRIS 16/95, KSR 9220, BS 5892, JIS E4502, TB/T 2945.
- From diameter 360mm to 1250mm.
- Minimum Order Quantity: 1 pc.



# TECHNICAL PROCESS OF WHEEL PRODUCTION





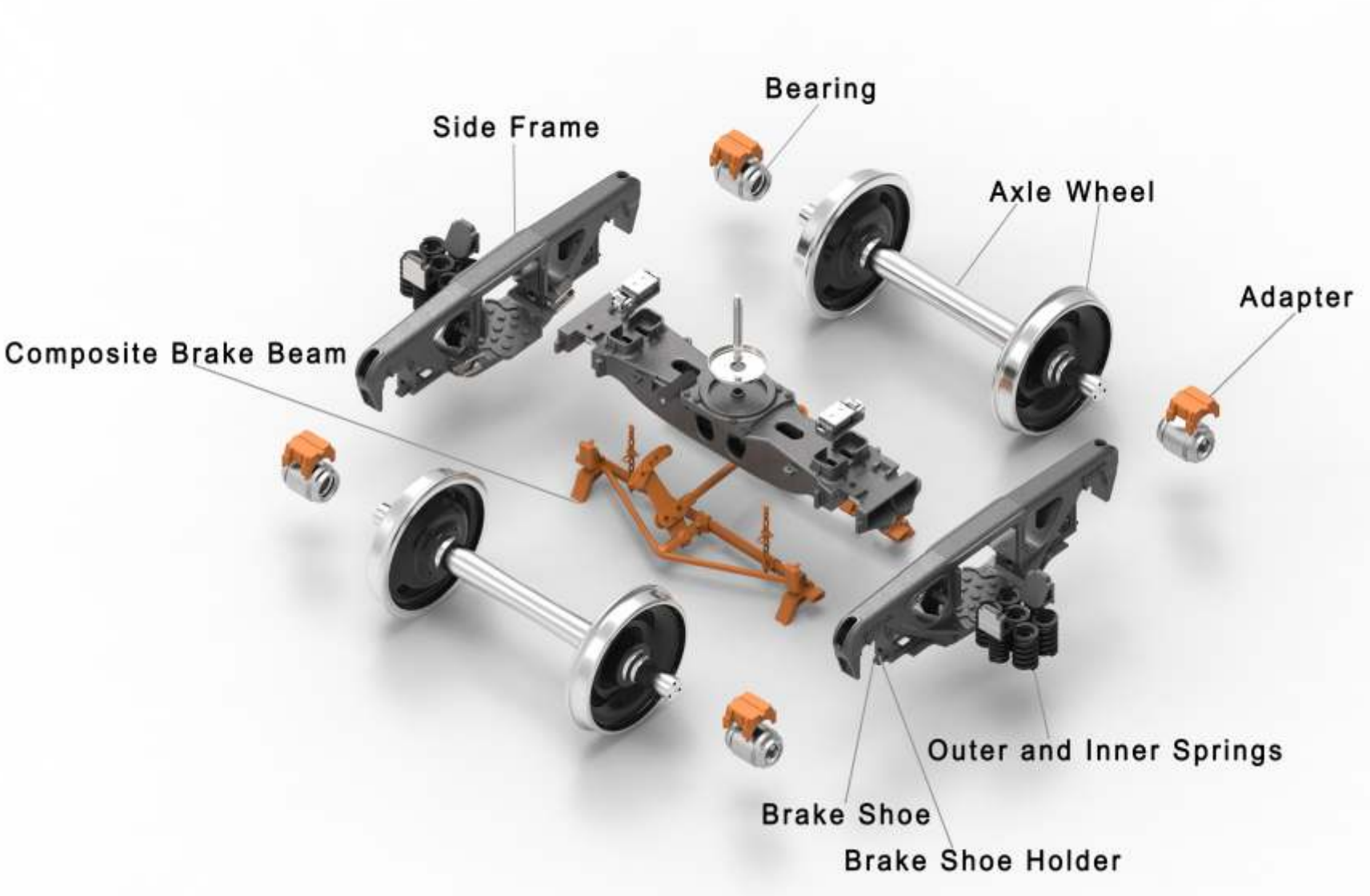
# INTERIOR

RAILTECO provides railway vehicle interiors total solution from technical desgin, production to on-site interior assembly. RAILTECO is equipped with a professional railway vehicles interiors design team and a 10000 square meters workshop with monthly production capacity of 20 vehicles.





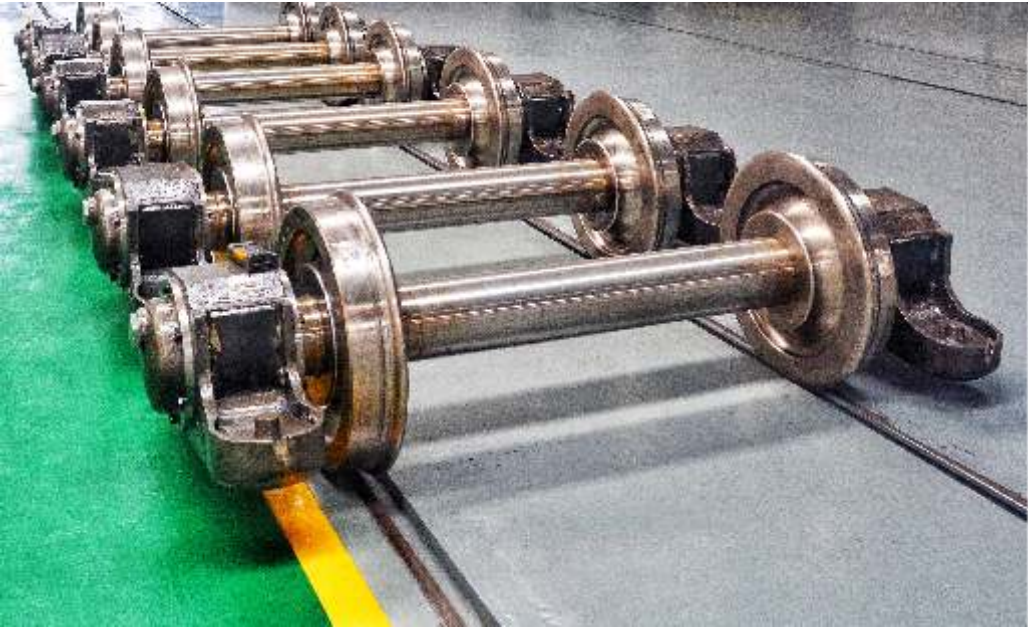
# BOGIE PARTS





# WHEEL SET

RAILTECO produces over 10000 wheel sets annually which are used for railway wagon, passenger coach and locomotive in different gauges. With professional quality control team,RAILTECO provides high quality wheel sets for worldwide clients. Standards:TB/T 1463, AAR GII, UIC 813, EN 13260, BS 5892-6, AS 7517, JIS E4504 and Customer's Requirement.





# RAILTECO SALES NETWORK

Stable quality products and reliable supply reputation with good after sale services help Railteco win fame at home and abroad markets, stepping into world sales network facilitates and Railteco walks into professionalization development path, we hope to cooperate with you to create a better future together!

